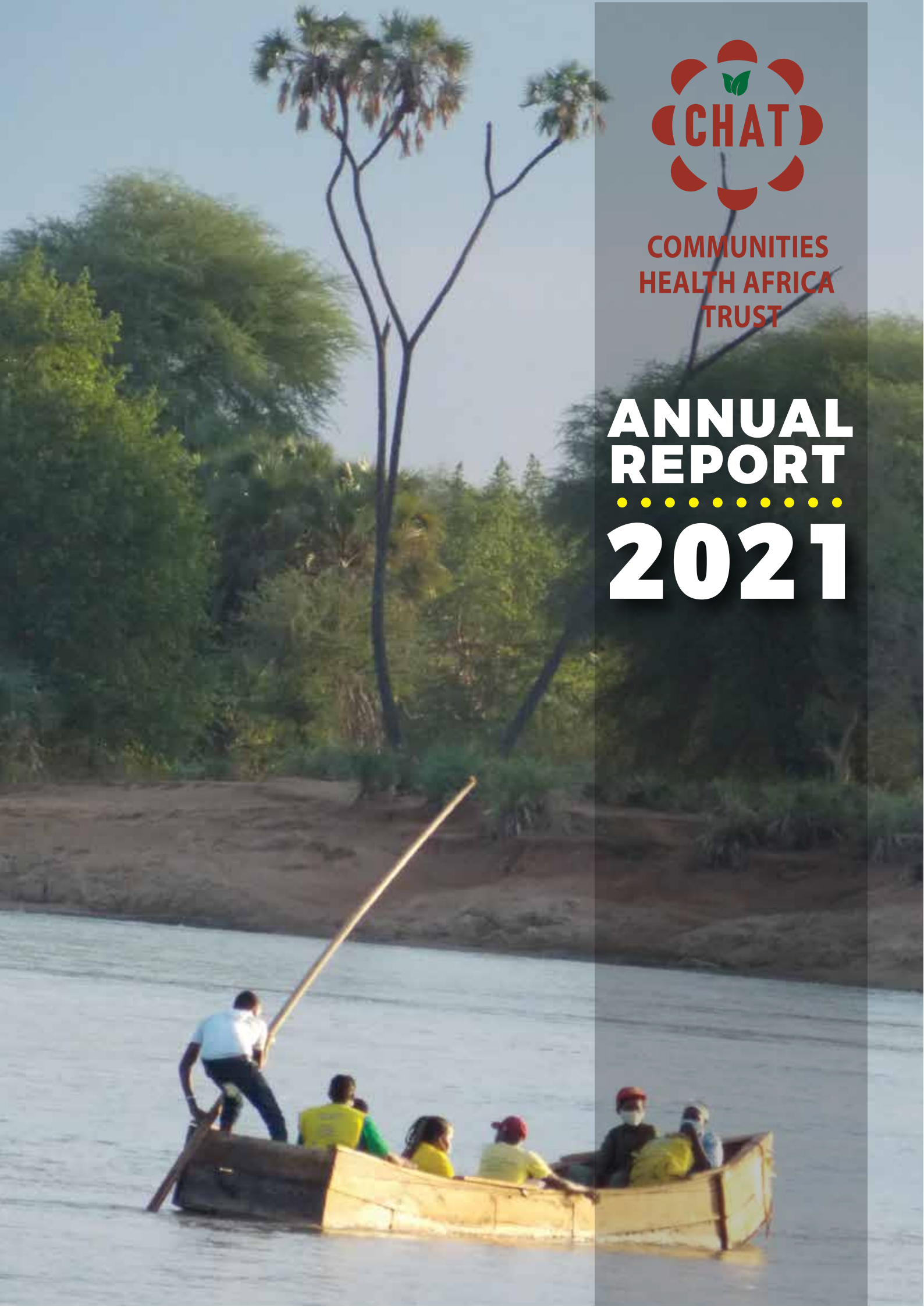




COMMUNITIES
HEALTH AFRICA
TRUST

ANNUAL REPORT 2021





VISION

CHAT envisions a future where individuals, communities and ecosystems across Africa are healthy and thriving.

MISSION

CHAT'S mission is to support underserved individuals and communities in fragile ecosystems across Kenya to access family planning information & services



MESSAGE FROM PROGRAMME COORDINATOR

CHAT continues to be guided by its 5 Year Strategic Plan (2019 – 2023).

Despite COVID 19 continuing to intimidate the world in 2021, it did not hinder CHAT from successfully implementing its activities that continue to focus on an integrated family planning service implementation in pursuit of 3 goals:

- 1) Providing access to family planning services,
- 2) Strengthening community structures,
- 3) Quiet, inclusive advocacy.

CHAT utilizes the tenants of an innovative Population, Health and Environment (PHE) approach which recognizes the complex interconnection between people, their health, and the natural resources on which they depend.

CHAT is delighted to report that many more men and male youth are willingly participating in the ‘family planning’ conversation, understanding that family planning is vital to themselves, their family, their livestock, the environment if overall wellbeing is to be achieved.

CHAT is grateful to the partner who so patiently assisted us with fundraising and communications support this last year – we hope that this capacity building can continue to help CHAT strengthen this challenging element in CHAT’s organisation.

CHAT also takes this opportunity to thank you, all our supporters, so much for being part of the positive changes we are seeing. Without your help thousands and thousands (if not millions) of desperate people would be without hope. The challenges are still great but we believe there is a hopeful future ahead.

Warm wishes from,

SHARON WREFORD-SMITH
CHAT FOUNDER & PROGRAM COORDINATOR



CHAT’s implementation model encompasses three core types of interventions, supported by a holistic approach to environmental awareness. These core interventions each respond to a specific set of needs or challenges for delivering family planning, and CHAT believes they must be delivered together to ensure sustainability and impact.



HEALTH SERVICES

CHAT also offers a suite of health services (TB, HIV testing and support, as well as basic curative treatment) Supported components of behaviour change (BCC) information & sensitization relevant to women, men, girls and boys, as a way of offering people a variety of entry points to access family planning. This integrated health service approach has proven successful in addressing the variety of barriers faced by under-served communities.



EMPOWERING COMMUNITIES

In the ecosystems where CHAT work, if they identify a community with no local health facility or committee, then the CORP in the area will establish a Village Development Committee (VDC). The CORP, with CHAT’s support, will connect this committee to local government & other agencies, to enable the community to build up a relationship with these agencies and to access training, funding & income generating opportunities. CHAT will also partner with the GoK to capacity strengthen community structures that support on issues such as gender violence, security, environmental conservation, water, and other development issues.

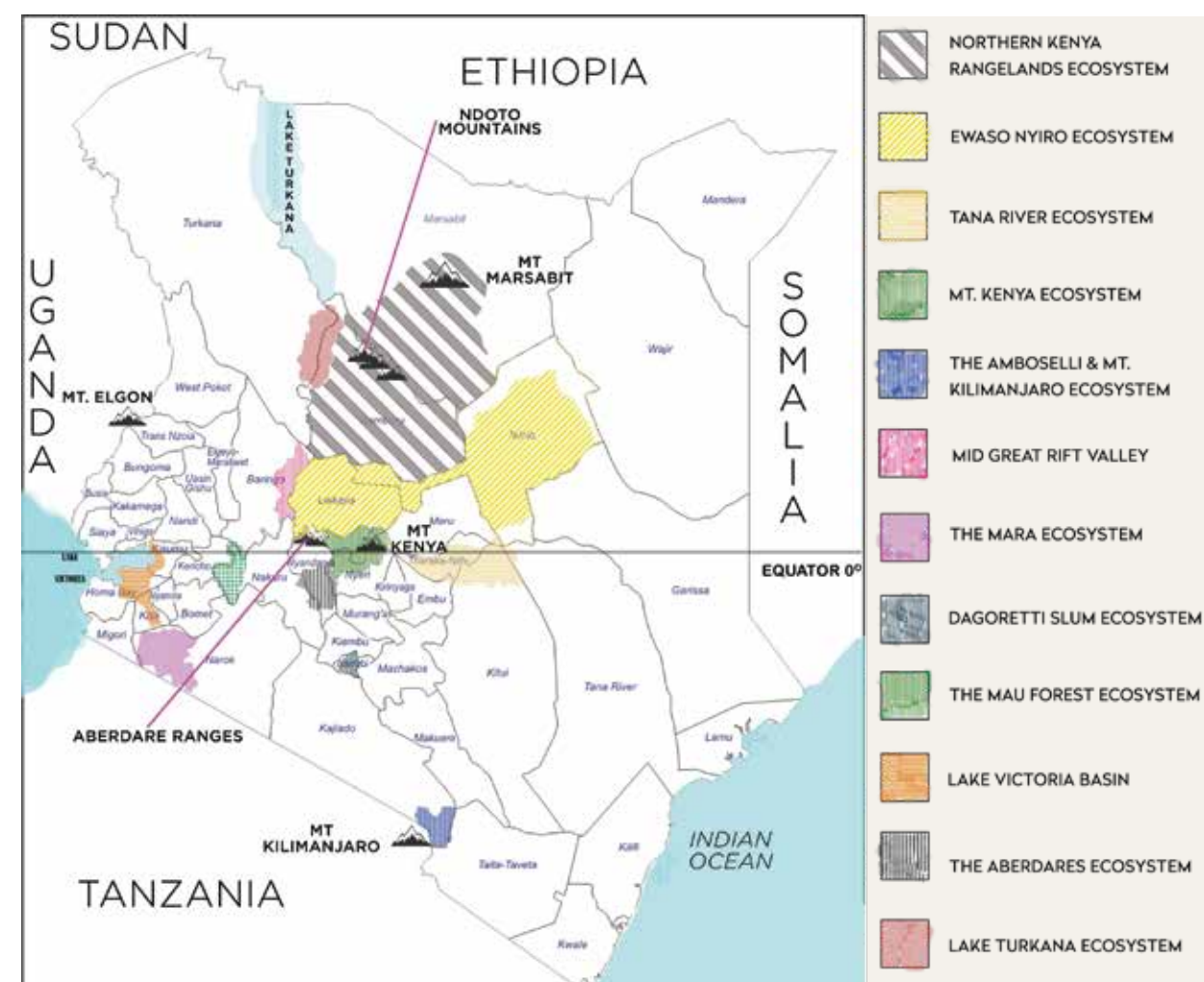


QUIET ADVOCACY

In the ecosystems where CHAT work, if they identify a community with no local health facility or committee, then the CORPs in the area will establish VDCs. The CORPs, with CHAT’s support, will connect this committee to local government agencies, to enable the community to build up a relationship with these agencies and to access training and funding opportunities. They also offer leadership on issues such as gender violence, security, environmental conservation, water, and other development issues.

ECOSYTEM

CHAT focuses their work where people and nature co-exist within fragile ecosystems. These areas include a variety of ecosystems from mountains, acacia woodland, dryland savannah, riverine areas, and include regions bordering conserved areas, within community conservancies and some urban slums.



UNDERSERVED

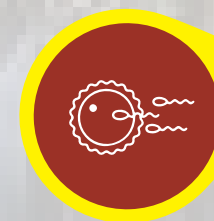
Approximately 80% of the inhabitants receiving CHAT's services live in underserved rural areas. Barriers for these individuals to access and use family planning include poverty, lack of education or literacy, remote areas with no functioning health facility, cultural and religious barriers and myths or misconceptions. For example, in Samburu, Laikipia, Isiolo, Marsabit & Baringo the people are largely transient, semi-nomadic pastoralists from a number of ethnic groups, including Samburu, Turkana, Pokot, Boran, Somali and Mukogodo.



> Individuals can contribute more towards livelihood and economic opportunities when family size is manageable. This includes social opportunities, education and economic outcomes for all individuals in the community.



> When you increase the spacing between children both mother and child have better health outcomes.



> Increased family planning use reduces suffering of particularly women, including gender-based violence.



> With the reduction of family size, populations reduce pressures on the environment.



> When natural resource availability improves, security overall will improve for communities.



> All our partners are key but the government is the most sustainable long-term partner for family planning, health, and environment needs of the community.



CHAT'S OUTREACH STRATEGIES

Reaching people by foot, vehicle or hoof!

► CAMELS

In the more remote and difficult to reach areas, CHAT employs mobile camel clinics, which offers integrated health services including family planning, antenatal care, HIV testing and counseling, basic curatives and referrals for These usually go out for a duration of one month at a time.





► BACKPACK

CHAT's CORP partners move by going door-to-door, in their own and surrounding communities providing information and counseling on family planning, implementing CHAT's innovative and integrated PHE approach. and any other health concerns individuals may have.

The CORPs provides referrals to local medical centres and assists individuals to access these services. The CORPs also engage with people about broader ecological and social issues that impact the community's overall well-being.



► MOTOR MOBILE

In some areas, initially a motor mobile clinic is organized to provide integrated health services including family planning, immunizations, antenatal care, child welfare clinics, basic curative treatment and referrals.



CHAT'S ECOSYSTEM

CHAT focuses their work where people and nature co-exist within fragile ecosystems. These areas include a variety of environments from mountains to acacia woodland to dryland savannah to riverine areas, urban slums and include regions bordering conserved areas, or within community conservancies. CHAT reached over 500 communities this year within the ecosystem we serve.

Within the ecosystems CHAT reaches population growth and density are unsustainable for the health of communities and the environment. People rely on the natural resources for their livelihood - and once these resources become degraded communities experience ever deepening cycles of poverty.

KEY FOR ECOSYSTEMS



CAMEL
MOBILE
OUTREACHES



MOTOR
MOBILE
(CIRCUITS)



NUMBER OF
INDIVIDUALS
REACHED WITH
POSITIVE PHE
BEHAVIOUR CHANGE
INFORMATION



BACKPACK
(ON FOOT)



VILLAGE
COMMITTEES



NUMBER OF
WOMEN
REACHED WITH
DIFFERENT FP
METHODS OF
THEIR CHOICE

CHAT ACTIVITIES IN VARIOUS REGIONS IN 2021

NORTH KENYA RANGELANDS

DRY, SHRUBBY, REMOTE

📍 Samburu & Marsabit, some of Isiolo County

ECOSYSTEM

	10		31,218
	0		5
	10days X 11 MTHS		20,443

*10 days in Northern Kenya Rangelands and in Ewaso for 20 days

TANA RIVER

CRITICAL WATER BASIN CRITICAL WATER
BASIN RUNNING THRO HUMID BAObA & SCRUBLAND

📍 Mwingi North & Tharaka South
Sub-Counties

ECOSYSTEM

	4		9,523
	0		0
	10days X 2 MTHS		6,699

MID EAST RIFT VALLEY

MIXED - GREEN HIGHLANDS WITH DRY SCRUB
LOW SCLANDS

📍 Muchongoi in Baringo County

ECOSYSTEM

	1		2,147
	0		0
	0		926

LAKE VICTORIA BASIN

INTENSE, SMALL-SCALE FARMING

📍 Nyaribari Masaba & Karachuonyo N.
Sub-Counties

ECOSYSTEM

	2		3,441
	0		0
	0		2,096

EWASO NYIRO

DRY, SHRUBBY, REMOTE

📍 Isiolo & Laikipia

ECOSYSTEM

	10		25,487
	1x4 days		5
	10 daysX 11 MTHS		17,818

THE MARA

WILDLIFE, WHEAT, PLAINS

📍 Narok County

ECOSYSTEM

	2		4,198
	0		0
	0		2,124

SLUMS

HARDSHIP, CROWDED & STRUGGLE

📍 Nairobi, Laikipia, Isiolo & Maralal Counties

ECOSYSTEM

	4		9,279
	0		0
	0		5,832

LAKE TURKANA

EXTREMELY HOT ENVIRONMENT

📍 Suguta Valley

ECOSYSTEM

	1		1,918
	0		0
	10 daysX 1 MTH		2,793

MT. KENYA

RIVERS, MOUNTAINS & DRY SHRUB LAND

📍 Meru, Nyeri & Nanyuki

ECOSYSTEM

	2		3,923
	0		0
	0		2,663

ABERDARES MOUNTAIN RANGE

MOUNTAINS, FORESTRY, RIVERS &
SMALL SCALE FARMING

📍 Nyandarua County

ECOSYSTEM

	1		2,068
	0		0
	0		881

MT. KILIMANJARO (AMBOSELI)

HARDSHIP & STRUGGLE

📍 Kajiado

ECOSYSTEM

	2		2,519
	0		0
	0		1,936

THE MAU


FORESTRY, RIVERS AND SMALL SCALE FARMING

📍 Elburgon, Molo & Kuresoi in Nakuru County

ECOSYSTEM

	2		4,141
	0		0
	0		2,793








CORPs

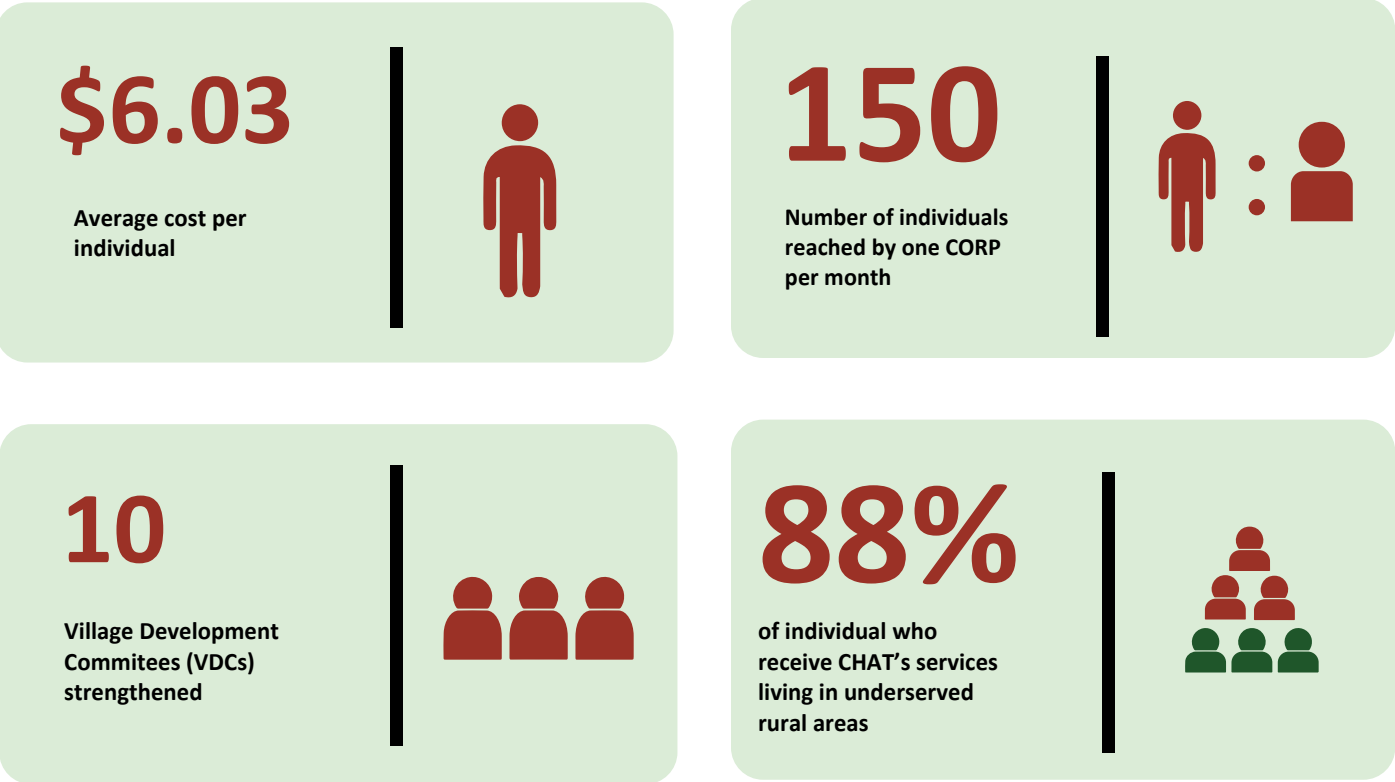
CHAT works with communities through a partnership approach. Community elders and leaders identify a ‘Community Own Resource Person’ (CORPs) who, by definition, must be good mobilisers, trusted by community, and able to respect individual’s confidentiality. There is no formal requirement, accreditation or education required before they join.

Each CORP supports their community in a customized way to the needs and challenges of that region, working alongside their home communities.

They focus on health and family planning but may also participate in finding solutions to issues around development, environment and livelihood projects. CORPs are performance based and supported by CHAT with ongoing mentoring and training (facilitated with the Government of Kenya).



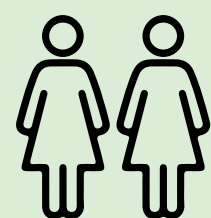
OUTREACH STRATEGY	COUNTIES	TRIPS (2021)	DAYS/ TRIP	CONTRACEPTION	FOR BEHAVIOR CHANGE	OTHER SERVICES	
 CAMEL MOBILE OUTREACHES	Laikipia	1	4	22	327	Patients	85
						ANC	11
						HIV Testing & Counselling	52
						CHAT staff(CORPs)	2
						Locum nurse	1
						Camel herders	6
 MOTOR MOBILE (CIRCUITS)	Laikipia Isiolo Samburu Suguta Valley Marsabit Kitui Tharaka Nithi	15	10	18,432	26,537	Patients	4,762
						ANC	394
						HIV Testing & Counselling	1,453
						Immunization (Referrals)	659
 BACKPACK (ON FOOT)	16	Daily	Daily	46,539	72,998	CORPs	40
						ANC	954
						HIV Testing & Counselling	2,431
						Immunization (Referrals)	1,143





HOW TO SUPPORT CHAT

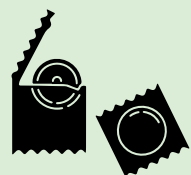
If you would like to support CHAT Please visit:	www.chatafrica.org/donate
To see our volunteering opportunities please visit:	www.chatafrica.org/volunteer
For any other enquiries please contact:	mobileclinicsafrica@gmail.com
Check out our projects on:	www.globalgiving.org
Donate/ volunteer for projects on:	www.givingway.com
MPESA PAYBILL	831300 A/C GG18563



US\$10
WILL PROVIDE 2 WOMEN
WITH SHORT-TERM
CONTRACEPTION
METHOD FOR
1 YEAR



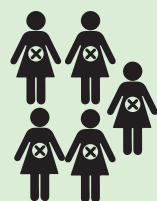
US\$15
WILL PROTECT 1 WOMAN
AGAINST UNWANTED
PREGNANCY FOR
5 YEARS



US\$25
WILL SUPPLY 1 MAN
WITH CONDOMS FOR
1 YEAR



US\$50
WILL SUPPORT A
COMMUNITY BASED
MOBILIZER FOR 2 WEEKS
TO PROVIDE EDUCATION
ON THE LINK BETWEEN
FAMILY PLANNING & THE
ENVIRONMENT



US\$75
WILL PROTECT 5 WOMAN
AGAINST UNWANTED
PREGNANCY FOR
5 YEARS



US\$150
WILL PROTECT 10 WOMAN
AGAINST UNWANTED
PREGNANCY FOR
5 YEARS



Mobile X-Ray during community TB screening.



Data verification during M&E



Patient screening before treatment



Crossing Ngare Ng'iro river during a camel mobile clinic





DONORS

Throughout CHAT’s history, there has been a focus on maintaining long-term partnerships with a variety of local, national and global donors and partners.

Many continue to support CHAT to this day, and we look forward to developing and growing our partnerships in the years to come. Here is a list of our donors in 2020. There are many private individual donors who contribute to our work and although we do not mention you here, we are very grateful for your support and will continue working hard for the communities we serve.

► DONORS

- “Anonymous” - Kenyan Trust
- Community Health a Poverty Solution (CHAPS) - US*
- Community Health and Sustainable Environment (CHASE) - UK*
- East Africa Women League -Kenya
- Global Fund
- Maliasili -Tanzania/US
- Kenya Wildlife Trust - Kenya
- The Nature Conservancy - US
- Lion Landscapes - Kenya
- Kijani Trust – Kenya
- Morony Foundation - US
- Penelope Martin Charitable Trust
- Tropical Air
- Nanyuki Horse Show
- Danny Rosenkranz
- Other donations via PayPal, MPESA, Global Giving & Giving Way

► PARTNERS

- Milgis Trust – Kenya
- Loisaba conservancy - Kenya
- Narupa Concervancy - Kenya
- Nkoteiya conservancy - Kenya
- Naibunga conservancy - Kenya
- Mpala Wildlife Foundation -Kenya
- Ol Jogi Conservancy – Kenya
- Suiyan - Kenya
- Government of Kenya
- Amref Health in Africa
- Mission for Essential Drugs & Supplies (MEDS)
- Nanyuki News
- 43 CORPs
- 33 grassroot health support groups & VDCs

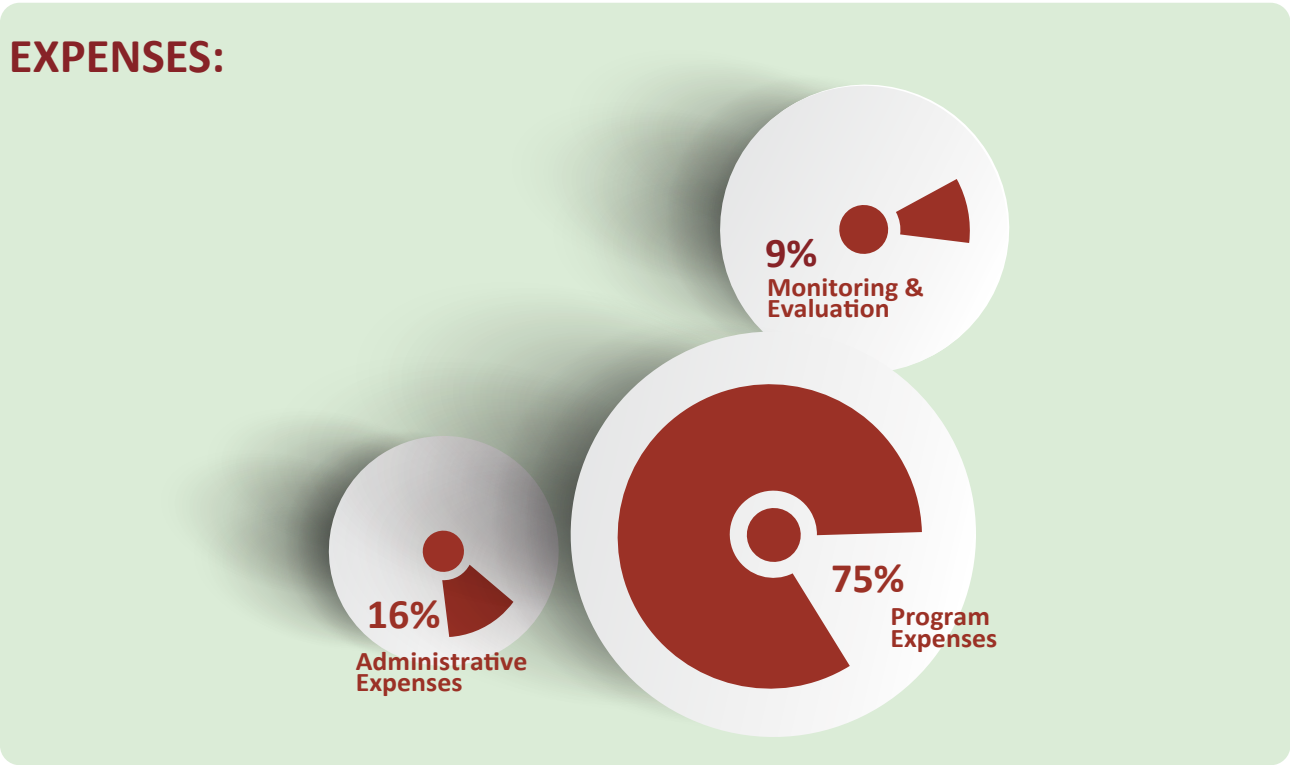
*CHAT is a founding partner



FINANCES

► **INCOME: KSH 60,282,649**

► EXPENSES:



► A DETAILED BREAKDOWN OF COSTS TAKEN FROM THE CHAT FINANCIAL STATEMENT 2021:

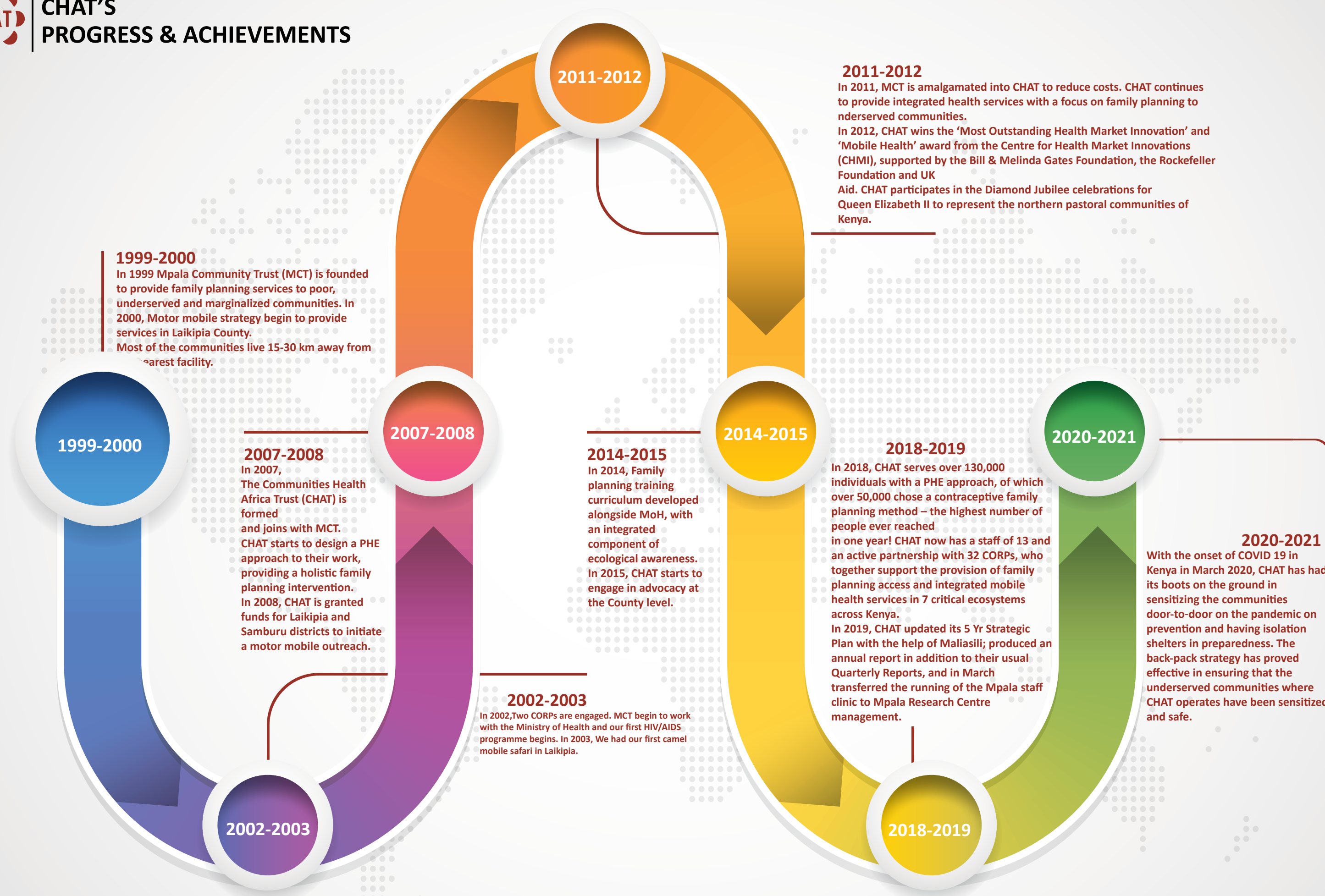
PROGRAM EXPENSES	45,219,614	
	Outreach activities	25,109,835
	Salaries and wages	17,807,966
	Motor vehicle running expenses	2,301,812
MONITORING & EVALUATION	5,158,103	
ADMINISTRATIVE EXPENSES	9,904,932	
	Salaries and wages	3,969,000
	Office expenses	2,697,845
	Insurance and licenses	1,451,177
	Depreciation	1,328,206
	Other(audit, bank charges etc)	458,703

All annua audits are available on the CHAT website at www.chat.org or can be requested from mobileclinicsafrica@gmail.com





CHAT'S PROGRESS & ACHIEVEMENTS





KENYA OFFICE

Lentile House, Nanyuki

CONTACTS

✉ mobileclinicsafrica@gmail.com

f [@communitieshealthafrica](https://www.facebook.com/@communitieshealthafrica)

@ [@communitieshealthafricatrust](https://www.instagram.com/@communitieshealthafricatrust)

🌐 www.chatafrica.org

OUR GLOBAL GIVING & GIVINGWAYS PROJECTS:

Globalgiving: <https://www.globalgiving.org/donate/6423/communities-health-africa-trust/>

Globalgiving: <https://www.givingway.com/organization/communities-health-africa-trust>

